

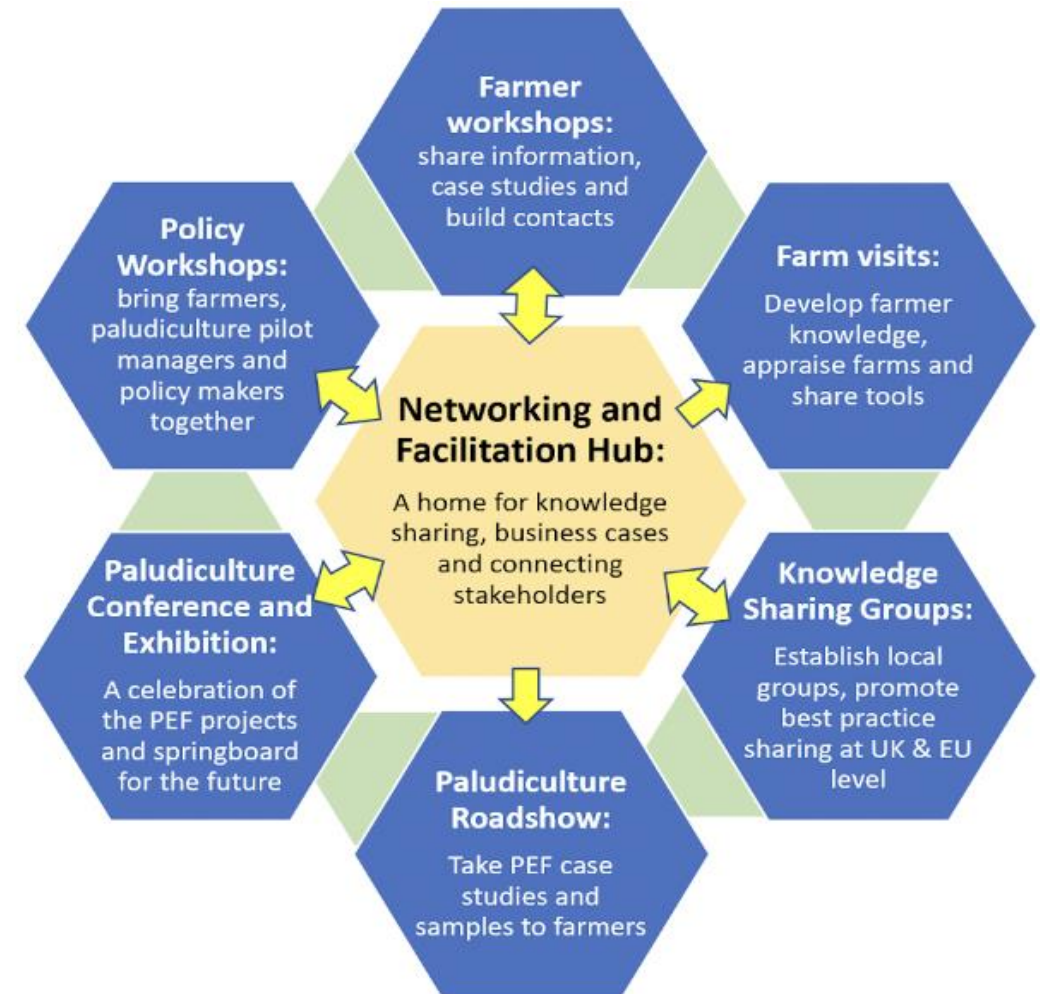
OPENpeat

Opportunities for Paludiculture and Engagement in the North west: promoting knowledge exchange and assessing opportunity

‘share best practice from existing and emerging paludiculture trials in order to overcome barriers to paludiculture uptake’

Five workstreams:

- Quantify potential carbon and biodiversity (BNG) benefits
- Communicate and research the business case
- Knowledge exchange
- Showcasing Paludiculture
- Policy engagement



So far....

- Extensive engagement with farmers already undertaken as part of Interreg Care-Peat
 - Farmer, landowner and policy workshops
 - Farmer survey in collaboration with NFU
 - Assessment of farm GHG emissions using SET tool
- Strong, positive response from key regional farmers, yet many, many more have not yet interacted
- Opportunity to develop peer to peer learning and knowledge sharing

