

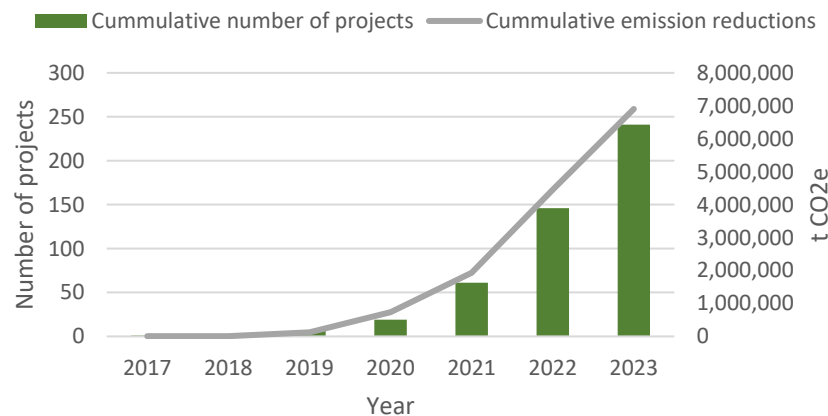
IUCN Peatland Programme: Paludiculture Call for Evidence

Ed Salter
Peatland Code Officer
IUCN UK Peatland Programme



Number of projects

- 241 Projects registered
- 32,000 ha of peatland restoration, 6,900,000 tCO₂e expected emission reductions over lifetime off all projects
- 77 Project validations
- 14 Restoration validations
- First verification happening right now



The Facility for Investment Ready Nature in Scotland (FIRNS)

Crediting Biodiversity

Our aim with this project is to develop the methods, documentation, governance, and infrastructure to enable biodiversity crediting for woodland creation and peatland restoration projects, including the capability to either stack with carbon or explicitly bundle the two quantified outcomes into one 'credit'

Buyer seller standardised contract

Our 2nd successful funding bid will see the development of standard buyer-seller contract terms in consultation with interested parties to ensure the terms meet the needs of woodland and peatland nature market players.

Both projects are in Partnership with the Woodland Carbon Code

Paludiculture Call for Evidence - survey

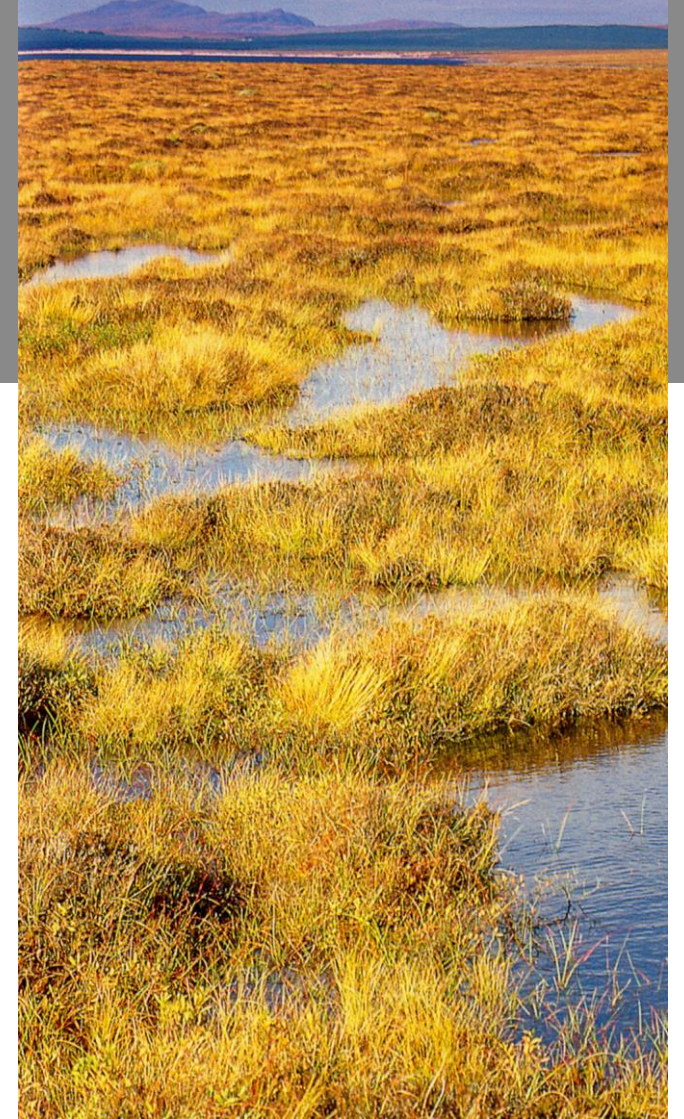
We invite any information about paludiculture sites greater than one hectare in any part of the UK, and all crop types, regardless of their success.

This information will help us to fully understand the current paludiculture landscape and seek funding for the research gaps that need filling.



Paludiculture trial

- Projects will be invited to trial the proposed measurement, reporting and verification methods for paludiculture, to help refine these for future inclusion in the Peatland Code.
- However, projects will not be registered with the Peatland Code and no third-party validation or verification will be needed. No carbon credits will be generated.
- Option to apply retrospectively, not guaranteed!



Paludiculture and Peatland Code Survey



**CLOSING
DATE:
9 FEBRUARY
2024**

Contact us:



peatlandcode@iucn.org.uk



www.iucn-uk-peatlandprogramme.org